

PASSAGE PLAN FOR PADSTOW & RIVER CAMEL

Courses

- 1 180/360 T
- 2 165/345 T
- 3 198/018 T

Padstow Harbour Office

Tel 01841 532239
 Fax 01841 533346
 VHF Channel 12
www.padstow-harbour.co.uk
padstowharbour@btconnect.com
 Office open 8.00am to 5.00pm weekdays, and two hours either side of every HW at Padstow.



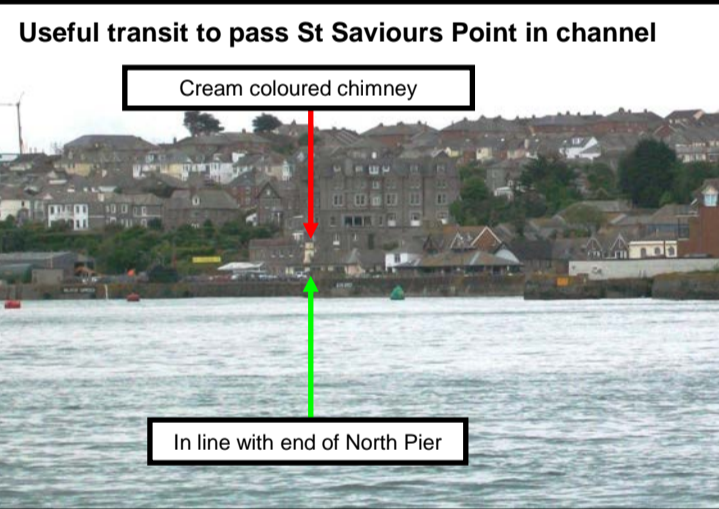
When entering, Pentire Point should be dead astern bearing 000 T

The most recent channel depth survey is at www.padstow-harbour.co.uk/phc_nav_guide.html

The Doom Bar
 Dangerous breaking seas may occur across the bar during times when there is a heavy swell running - particularly when the tide height is below half water.

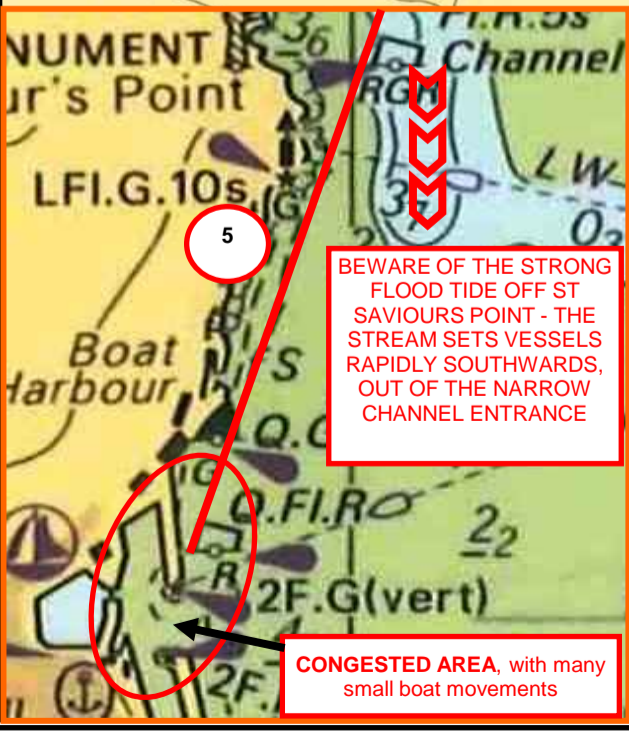
NCI Lookout point.

Beware of kitesurfers and windsurfers crossing the channel between Daymer Bay and Hawkers Cove.



Call Padstow Harbour on Ch 12.
 Essential on larger V/L's (over 20metres), to establish that the narrow channel is clear.

Brea Hill Spit Buoy
 New Port Hand buoy FI 2 (R) 5s provided because of the sand spit extending further West.



Padstow to Rock Passenger Ferry Routes

